

# METAL ROOFING

EXPRESS PIEZO soldering irons have given a new design : they are still fitted with the swivel attachment (to prevent breaking or coiling of the hose)...and now, many other features !

Cat. No. **6367/8**  
with 678 tip

OR

Cat. No. **6367/9**  
with 679 tip



High-resistance knob to prevent accidental adjustment of the gas flow rate

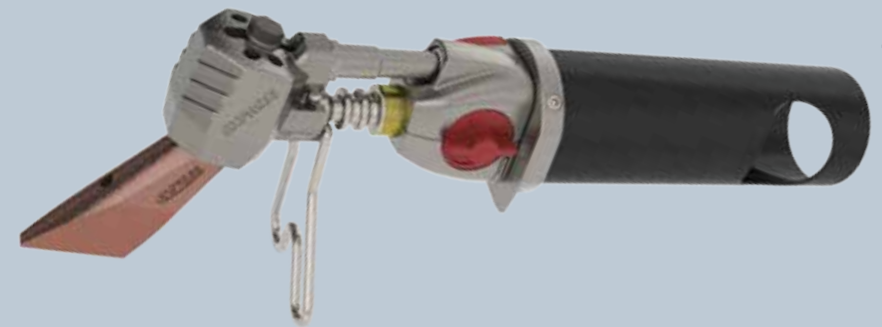
Soft-touch ergonomic handle

Swivel attachment 3/8° left in



Allen key to access interchangeable parts

The flush Piezo ignition and compact metal casing make it excellent for work in hard-to-reach places (roof guttering, downpipes, etc.)



Cat. No. **364**

Ideal for finishing work ! The metal casing of the hoseless soldering iron has been designed identically to the 367/8 and 367/9 soldering irons.

## SELF-MAINTENANCE

- ⊕ The **Piezo** can be changed **without tools**.
- ⊕ The **ignition system** can be changed easily in using the **key built into the metal casing**.
- ⊕ The **gas nozzle** can be accessed by removing the burner, also using the built-in key.



**GUILBERT EXPRESS**  
33 avenue du Maréchal de Lattre de Tassigny  
F - 94127 FONTENAY SOUS BOIS CEDEX  
0 825 800 251  
[www.guilbert-express.net](http://www.guilbert-express.net)



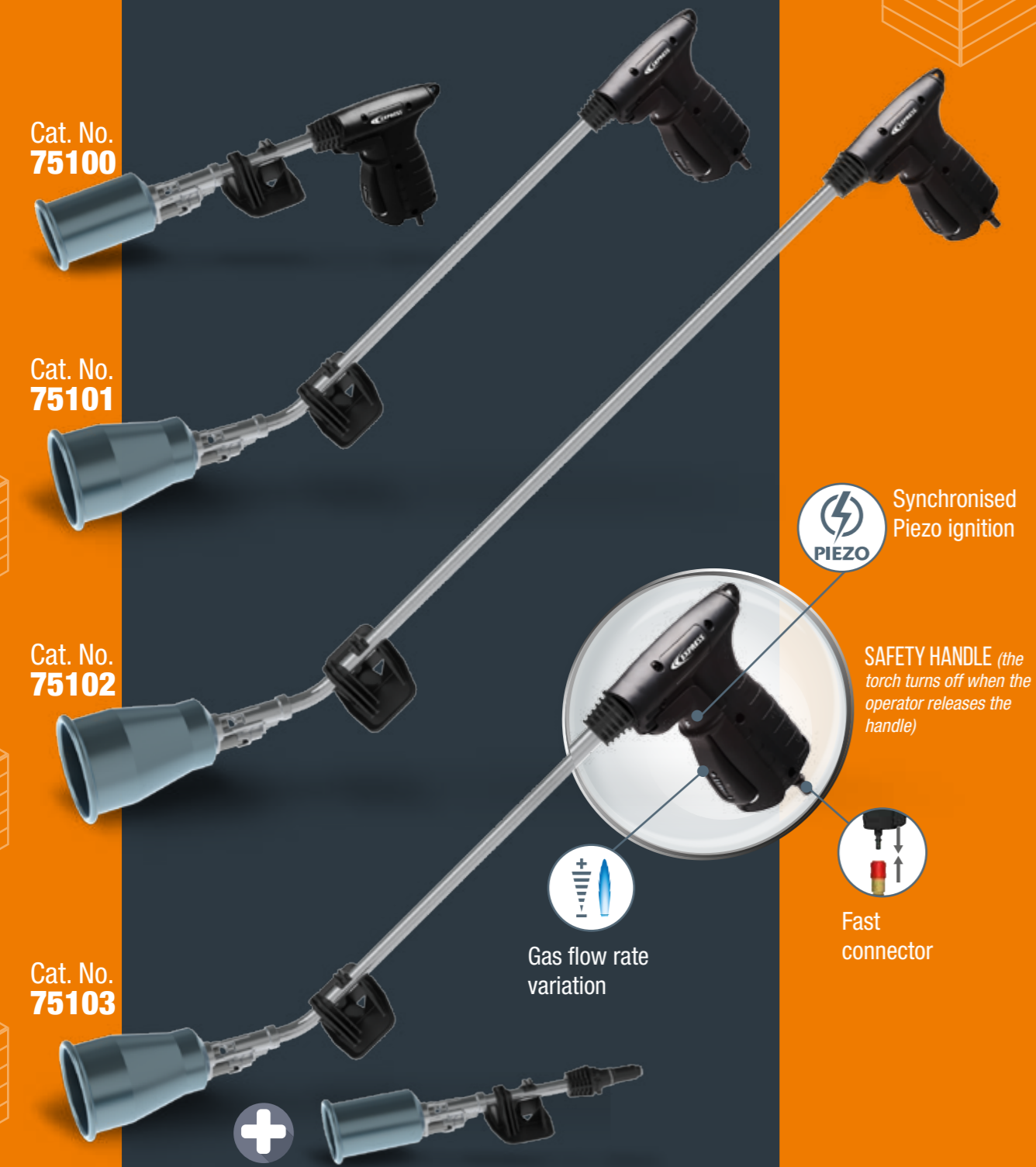
# NEW RELEASES 2018





# FLAT ROOFING PIEZO TITANE R TORCHES

Torches fitted with a safety handle, quick-release coupling and piezo trigger.



Synchronised Piezo ignition

**SAFETY HANDLE** (the torch turns off when the operator releases the handle)

Fast connector

Gas flow rate variation

## TITANE R BURNERS



Cat. No. **50RL200**  
**TITANE R BURNER**  
Dia. 1.96 in / 5.11 in neck tube

184 000 BTU/h



Cat. No. **100RL200**  
**TITANE R BURNER**  
Dia. 2.36 in / 5.11 in neck tube

345 000 BTU/h



Cat. No. **100RL400**  
**TITANE R BURNER**  
Dia. 2.36 in / 15.74 in neck tube



Cat. No. **150RL200**  
**TITANE R BURNER**  
Dia. 2.75 in / 5.11 in neck tube

511 500 BTU/h



Cat. No. **150RL400**  
**TITANE R BURNER**  
Dia. 2.75 in / 15.74 in neck tube



Cat. No. **150RL600**  
**TITANE R BURNER**  
Dia. 2.75 in / 23.62 in neck tube



## PIEZO TITANE RANGE

As robust and lightweight as ever, they feature electric ignition, for improved safety on worksites and enhanced user comfort !



Cat. No. **50TP**

**TITANIUM PIEZO BURNER**  
Dia. 1.96 in / Power 50 kW (184 000 BTU/h)

Cat. No. **100TP**

**TITANIUM PIEZO BURNER**  
Dia. 2.36 in / Power 100 kW (345 000 BTU/h)

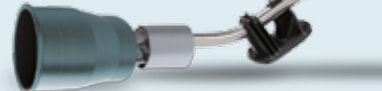
Cat. No. **150TP**

**TITANIUM PIEZO BURNER**  
Dia. 2.76 in / Power 150 kW (511 500 BTU/h)

Cat. No. **50TPL200**  
**TITANIUM PIEZO BURNER**  
Dia. 1.96 in / Power 50 kW (184 000 BTU/h) + 5.11 in neck tube



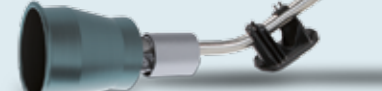
Cat. No. **100TPL400**  
**TITANIUM PIEZO BURNER**  
Dia. 2.36 in / Power 100 kW (345 000 BTU/h) + 15.74 in neck tube



Cat. No. **150TPL200**  
**TITANIUM PIEZO BURNER**  
Dia. 2.75 in / Power 150 kW (511 500 BTU/h) + 5.11 in neck tube



Cat. No. **150TPL400**  
**TITANIUM PIEZO BURNER**  
Dia. 2.75 in / Power 150 kW (511 500 BTU/h) + 15.74 in neck tube



Cat. No. **650**  
**BI-MATERIAL AND ERGONOMIC HANDLE**  
3/8" left in

